

F186



VOLANTINO A CROCE PIENO CON BOCCOLA FILETTATA CIECA

Materiali:

Poliamide rinforzata.
Resistente ad olii e grassi.

Superficie:

Satinata.

Colore:

Nero (RAL 9011).

Inseri:

Versione F186:

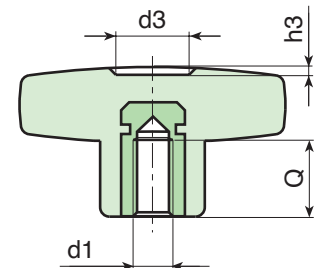
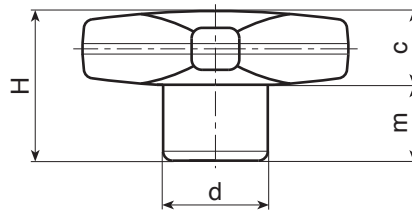
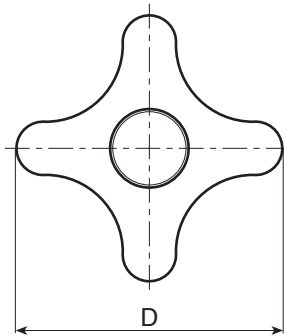
Boccola con foro filettato cieco in ottone, (tolleranza filetto 6H).

Versione F186CIN:

Boccola con foro filettato cieco in acciaio inox (Aisi 303), (tolleranza filetto 6H).

Richieste Speciali:

- Su richiesta e per quantità gli inserti possono essere forniti in materiale diverso.
- Su richiesta e per quantità colori (attenzione gamma ridotta) come da tabella colori [pag. 959].



Versione F186: con inserto in ottone.

| Codice | Art. | D | H | d | c | m | d3 | h3 | d1 _{6H} | Q | g |
|-------------|---------------|----|------|----|------|------|----|-----|------------------|----|------|
| F18632.0001 | F18632.TM0401 | 32 | 23 | 15 | 11 | 12 | 11 | 1.5 | M4 | 7 | 11 |
| F18632.0004 | F18632.TM0501 | 32 | 23 | 15 | 11 | 12 | 11 | 1.5 | M5 | 14 | 11.5 |
| F18632.0008 | F18632.TM0601 | 32 | 23 | 15 | 11 | 12 | 11 | 1.5 | M6 | 10 | 12 |
| F18632.0012 | F18632.TM0801 | 32 | 23 | 15 | 11 | 12 | 11 | 1.5 | M8 | 14 | 12.5 |
| F18632.0014 | F18632.TM1001 | 32 | 23 | 15 | 11 | 12 | 11 | 1.5 | M10 | 14 | 13 |
| F18640.0002 | F18640.TM0501 | 40 | 24.5 | 16 | 12 | 12.5 | 13 | 1.5 | M5 | 14 | 14 |
| F18640.0005 | F18640.TM0601 | 40 | 24.5 | 16 | 12 | 12.5 | 13 | 1.5 | M6 | 16 | 15 |
| F18640.0009 | F18640.TM0801 | 40 | 24.5 | 16 | 12 | 12.5 | 13 | 1.5 | M8 | 14 | 16 |
| F18640.0014 | F18640.TM1001 | 40 | 24.5 | 16 | 12 | 12.5 | 13 | 1.5 | M10 | 14 | 17 |
| F18650.0003 | F18650.TM0601 | 50 | 29 | 20 | 14 | 15 | 14 | 2 | M6 | 16 | 25 |
| F18650.0007 | F18650.TM0801 | 50 | 29 | 20 | 14 | 15 | 14 | 2 | M8 | 14 | 26 |
| F18650.0012 | F18650.TM1001 | 50 | 29 | 20 | 14 | 15 | 14 | 2 | M10 | 14 | 27 |
| F18650.0017 | F18650.TM1201 | 50 | 29 | 20 | 14 | 15 | 14 | 2 | M12 | 18 | 29 |
| F18660.0001 | F18660.TM0801 | 60 | 34 | 24 | 15.5 | 18.5 | 18 | 2 | M8 | 19 | 40 |
| F18660.0005 | F18660.TM1001 | 60 | 34 | 24 | 15.5 | 18.5 | 18 | 2 | M10 | 21 | 43 |
| F18660.0009 | F18660.TM1201 | 60 | 34 | 24 | 15.5 | 18.5 | 18 | 2 | M12 | 18 | 44 |
| F18660.0013 | F18660.TM1401 | 60 | 34 | 24 | 15.5 | 18.5 | 18 | 2 | M14 | 19 | 47 |

Versione F186CIN: con inserto in acciaio inox (Aisi 303).

INOX

| Codice | Art. | D | H | d | c | m | d3 | h3 | d1 _{6H} | Q | g |
|-------------|------------------|----|------|----|------|------|----|-----|------------------|----|------|
| F18632.0006 | F18632.TM0501CIN | 32 | 23 | 15 | 11 | 12 | 11 | 1.5 | M5 | 14 | 11.5 |
| F18632.0010 | F18632.TM0601CIN | 32 | 23 | 15 | 11 | 12 | 11 | 1.5 | M6 | 10 | 12 |
| F18632.0013 | F18632.TM0801CIN | 32 | 23 | 15 | 11 | 12 | 11 | 1.5 | M8 | 14 | 12.5 |
| F18640.0007 | F18640.TM0601CIN | 40 | 24.5 | 16 | 12 | 12.5 | 13 | 1.5 | M6 | 16 | 15 |
| F18640.0011 | F18640.TM0801CIN | 40 | 24.5 | 16 | 12 | 12.5 | 13 | 1.5 | M8 | 14 | 16 |
| F18640.0015 | F18640.TM1001CIN | 40 | 24.5 | 16 | 12 | 12.5 | 13 | 1.5 | M10 | 14 | 17 |
| F18650.0009 | F18650.TM0801CIN | 50 | 29 | 20 | 14 | 15 | 14 | 2 | M8 | 14 | 26 |
| F18650.0014 | F18650.TM1001CIN | 50 | 29 | 20 | 14 | 15 | 14 | 2 | M10 | 14 | 27 |
| F18650.0018 | F18650.TM1201CIN | 50 | 29 | 20 | 14 | 15 | 14 | 2 | M12 | 18 | 29 |
| F18660.0003 | F18660.TM0801CIN | 60 | 34 | 24 | 15.5 | 18.5 | 18 | 2 | M8 | 19 | 40 |
| F18660.0007 | F18660.TM1001CIN | 60 | 34 | 24 | 15.5 | 18.5 | 18 | 2 | M10 | 21 | 43 |
| F18660.0011 | F18660.TM1201CIN | 60 | 34 | 24 | 15.5 | 18.5 | 18 | 2 | M12 | 18 | 44 |