

# J300

## LOCKING BRACKET WITH THROUGH HOLE



**Materials:**

Reinforced polyamide.  
Resistant to oils and greases.

**Surface finish:**

Satin.

**Colour:**

Black (RAL 9011).

**Hole**

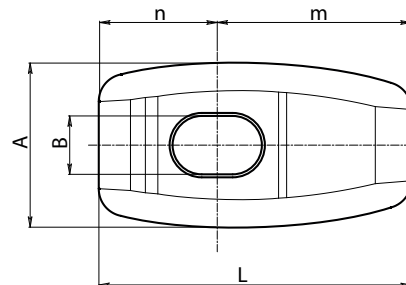
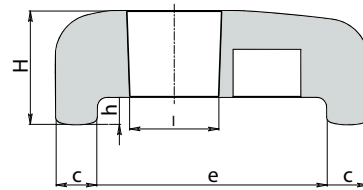
Smooth through hole obtained by moulding the plastic.

**Special Requests:**

- None.



J



The use of the J300 bracket must be combined with a knob with a threaded stud. An effective combination could be the one with T-handle art. L271. Used together they function as a quick locking and release system for panels of machinery in general. Particularly suitable for insulating panels of large external air conditioning chiller units.

Code	Art.	A	L	H	B	l	c	e	h	n	m	g
-	J30046.TG08.501	24	45.5	16.5	8.5	13	6	33.5	4	17	28.5	15
-	J30068.TG08.501	24	67.5	16.5	8.5	13	6	55.5	4	17.5	50	19