

KS

ADAPTER FOR INDICATOR



Materials:

Reinforced and stabilized polyamide.
Resistant to oils and greases.

Surface finish:

Satin.

Colour:

Black (RAL 9011).

Alternative adapter colours:

- Orange (RAL 2004 code 02).
- Blue (RAL 5015 code 07).
- Yellow (RAL 1021 code 10).
- Red (RAL 3000 code 16).
- Green (RAL 6024 code 17).
- Grey (RAL 7035 cod. 13).

Attention:

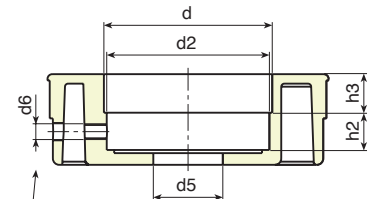
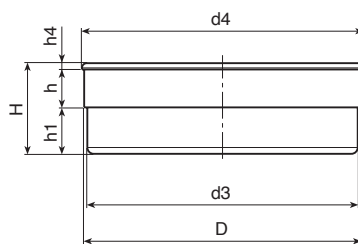
Indicator grub screw not supplied.

Special Requests:

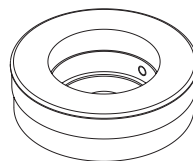
- None.



K



Fixing grub screw position



Code	art.	D	d	d2	d3	d4	d5	d6	H	h	h1	h2	h3	h4	
-	KS080.05001	87,4	52,4	51,5	85,5	89	22	M6	28,5	14	14,5	11,8	12,2	2	80