

O530

BASIC VERTICAL LIFT-OFF HINGE



Materials:

(1-2) Die-cast zamak alloy (zinc, aluminium and copper alloy).

Surface finish:

Colour:

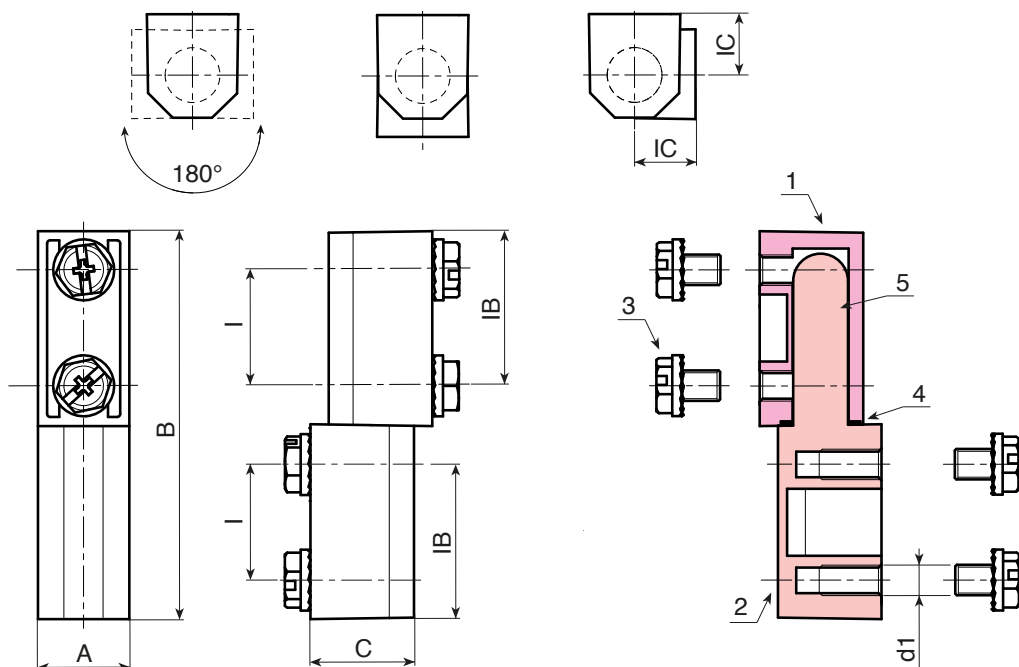
(O1) Black epoxy powder coated (RAL 9011).
(Z) Standard blue galvanising.

Inserts:

(3) 4 galvanised steel screws M05x06 with toothed lock washer.
(4) Black oxide treated spacer washer.
(5) Die-cast zamak pivot pin.

Special Requests:

- Upon request and for special quantities (minimum 100 pieces) the hinge can be supplied with a stainless steel pivot pin (Aisi 304) (code O530019.ZM0501CIN).



Black coated version code O1 ending

Code	Art.	I	IB	IC	A	B	C	d1	
-	O530019.ZM0501	19	25,5	10	15	64,5	17	M5	86

Galvanised version code Z ending

Code	Art.	I	IB	IC	A	B	C	d1	
-	O530019.ZM05Z	19	25,5	10	15	64,5	17	M5	86