

Q264

6-LOBE WASHER

+135°
-30°

PA6
+G.F.

UL94
HB

RoHS
COMPLIANT

Materials:

Reinforced polyamide.
Resistant to oils and greases.

Surface:

Satin.

Colour:

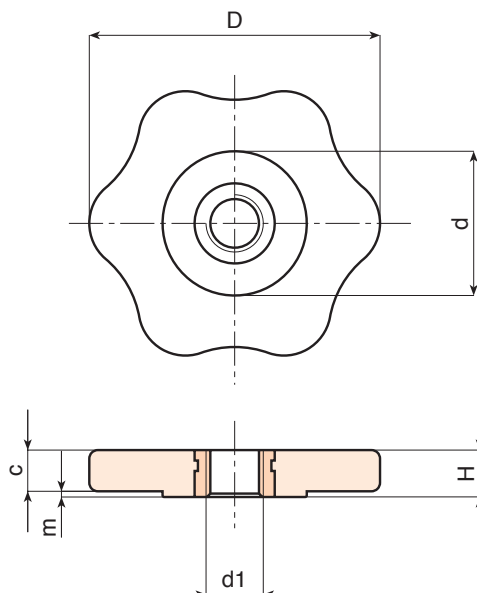
Black (RAL 9011).

Inserts:

Brass insert with threaded through hole (thread tolerance 6H).

Special Requests:

- Upon request and for special quantities inserts can be supplied in different materials.
- Upon request and for special quantities available in the colours indicated in the chart [page].



Code	art.	D	H	d	c	m	d1 _{6H}	🔒
-	Q26450.TM0601P	50	8	25	7	1	M6	18
-	Q26450.TM0801P	50	8	25	7	1	M8	18
-	Q26450.TM1001P	50	8	25	7	1	M10	20