

O300

METAL HINGE WITH THROUGH HOLES



Materials:

Die-cast zamak alloy (zinc, aluminium and copper alloy).

Surface finish:

Smooth.

Colour:

O300:
Black cataphoresis coating.

O300Z:
Standard blue galvanising.

Inserts:

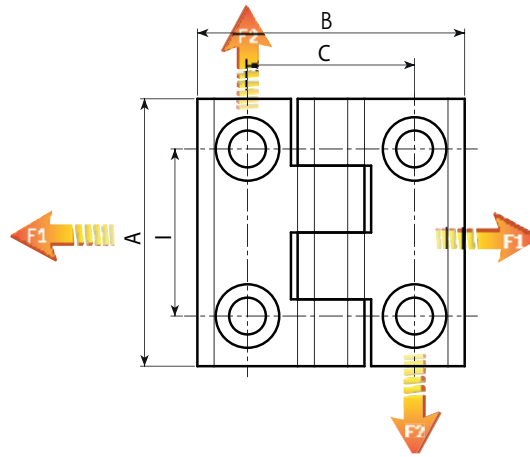
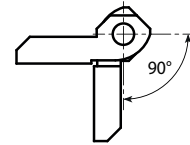
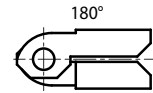
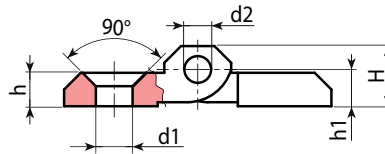
Stainless steel pivot pin (Aisi 303).

Holes:

Through holes obtained by moulding. 90° countersunk hole for UNI 5933
- UNI 6109 screws.

Special Requests:

- None.



Version O300: zamak hinge, black cataphoresis coating

Code	Art.	I	C	A	B	H	h	h1	d2	d1	g	F1 (N)	F2 (N)
-	O30025.ZG5.501	25	25	40	40	10	5	5,5	4	5,5	45	-	-
-	O30030.ZG6.501	30	30	50	50	11,5	6	6	6	6,5	90	6230	1420
-	O30036.ZG6.501	36	36	60	60	15	8	9	6	6,5	115	-	-
-	O30036.ZG8.501	36	36	60	60	15	8	9	6	8,5	110	-	-
-	O30040.ZG6.501	40	40	64	64	11,5	6	6,5	6	6,5	115	4340	4200

Version O300Z: galvanised zamak hinge

Code	Art.	I	C	A	B	H	h	h1	d2	d1	g	F1 (N)	F2 (N)
-	O30025.ZG5.5Z	25	25	40	40	10	5	5,5	4	5,5	45	-	-
-	O30030.ZG6.5Z	30	30	50	50	11,5	6	6	6	6,5	90	6230	1420
-	O30036.ZG8.5Z	36	36	60	60	15	8	9	6	8,5	110	-	-
-	O30036.ZG8.5Z	36	36	60	60	15	8	9	6	6,5	115	-	-
-	O30040.ZG6.5Z	40	40	64	64	11,5	6	6,5	6	6,5	115	4340	4200