

# S112

## MALE CABLE CONNECTOR



### Materials:

(4) Polypropylene and SBS rubber alloy, 75 Shore.  
Resistant to oils and greases.

### Surface finish:

Smooth.

### Colour:

Black (RAL 9011).

### Inserts:

(1) Brass insert with male connector EN 60794:12.  
(2) Soft copper cable collector tube.  
(3) Hexagon socket grub screw DIN 913-45H (for version M95-00 no. 2 grub screws).

### Special Requests:

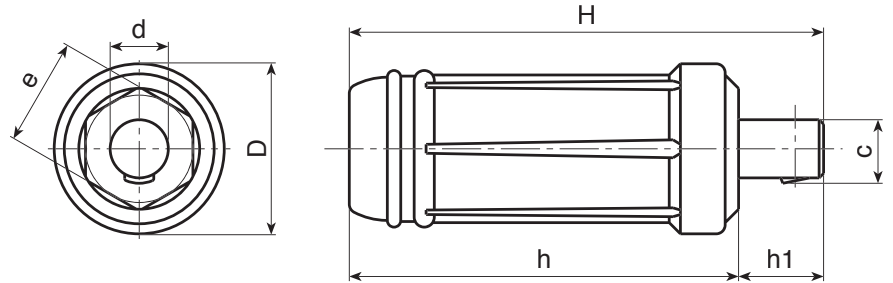
- None.



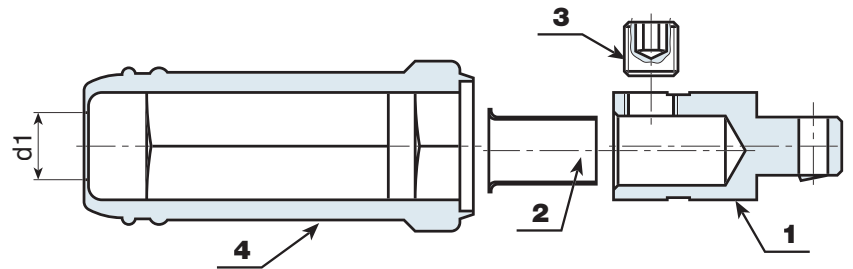
S111+S112



S112+S117



S112+S113



Code	art.	D	H	h	h1	d	c	e	d1		Amp. Max
S112.0001	S112.M2500	24.5	70	59	11	9	10	14	8.5	37	200
S112.0003	S112.M3550	35	106	87	19	13	14.5	21	11	130	250
S112.0004	S112.M7000	38	106	87	19	13	14.5	24	15.5	148	400
S112.0006	S112.M9500	38	106	87	19	13	14.5	24	15.5	200	500