

# W100HIN

NEW

+200°  
-40°

AISI  
304

RoHS  
COMPLIANT

## VOLANTINO LOBATO IN ACCIAIO INOX CON FORO FILETTATO

INOX

### Materiali:

Acciaio inox microfuso, (Aisi 304).

### Superficie:

Satinata per elettro-lucidatura.

### Colore:

Naturale.

### Foro:

#### Versione HNM:

Foro filettato cieco, (tolleranza filetto 6H).

#### Versione HND:

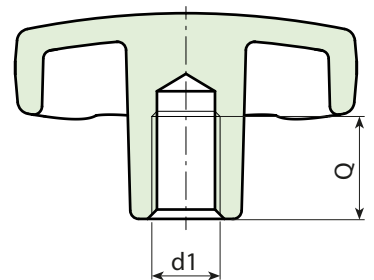
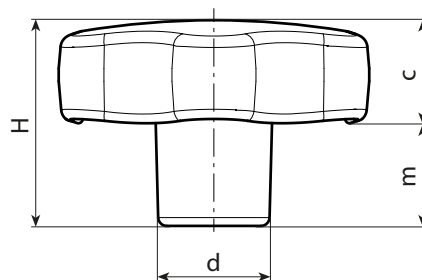
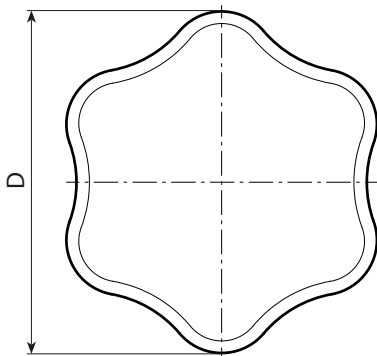
Foro liscio cieco, (tolleranza foro H7).

### Richieste speciali:

- Nessuna.



06



Versione HNM: con foro filettato cieco

INOX

Codice	Art.	D	H	d	m	d <sub>16H</sub>	Q	g
W10030.0002	W10030.HNM05HIN	30	21	11	11	M5	10	-
W10030.0003	W10030.HNM06HIN	30	21	11	11	M6	10	-
W10040.0003	W10040.HNM06HIN	40	24	13	12	M6	12	-
W10040.0004	W10040.HNM08HIN	40	24	13	12	M8	15	-
W10050.0003	W10050.HNM08HIN	50	31	15	13,5	M8	15	-
W10050.0004	W10050.HNM10HIN	50	31	15	13,5	M10	18	-
W10060.0003	W10060.HNM08HIN	60	39	17	18	M8	15	170
W10060.0004	W10060.HNM10HIN	60	39	17	18	M10	18	170
W10060.0005	W10060.HNM12HIN	60	39	17	18	M12	22	170

Versione HND: con foro liscio H7 cieco

INOX

Codice	Art.	D	H	d	m	d <sub>1H7</sub>	Q	g
W10040.0002	W10040.HND08HIN	40	24	13	12	08	15	-
W10050.0002	W10050.HND10HIN	50	31	15	13,5	10	18	-
W10060.0002	W10060.HND12HIN	60	39	17	18	12	22	170