



BOTECA[®]

IMPUGNATURE DI MANOVRA

OUR WATCHWORD:
CUSTOMIZATION FOR ALL!



Num. 01 - Ottobre 2018

**EXPANDED
COLOUR RANGE:**

2 new colours for handles and T-handles.

NEW!

New stainless steel wing nut.

**BOTECA
NEWS**



CUSTOMIZATION FOR ALL!

The new adhesive buttons are here.

Continue to improve so we can offer concrete solutions to our customers. This is one of our company's main missions. And this is why we have introduced a new service. As from today you can **customize** your products easily and quickly with our new **adhesive BUTTONS** which can be printed with logos, pictograms or images. An excellent alternative to pad printing on caps or directly on the product.

The button is covered with a 2mm-3mm thick transparent polyurethane resin **to protect the print as well as calling attention to it**. The image will therefore not get scratched as it is protected by the transparent coating which, due to the 'lens effect', also makes it look better

The result? **Lower minimum order quantities** than those for the pad printed items but **higher quality**.

This button is designed to fit into the recess of the 4-lobe handwheels (items G730-G731-G732-G733-G734-G735), the cross handwheels (items F186-F187-F188-F189) and the 6-lobe handwheels (items F175-F176-F177-F178), but it can be glued to any grey cap, solid handwheel, spoke handwheel or control knob.

LESSER
QUANTITY
+
GREATER
QUALITY

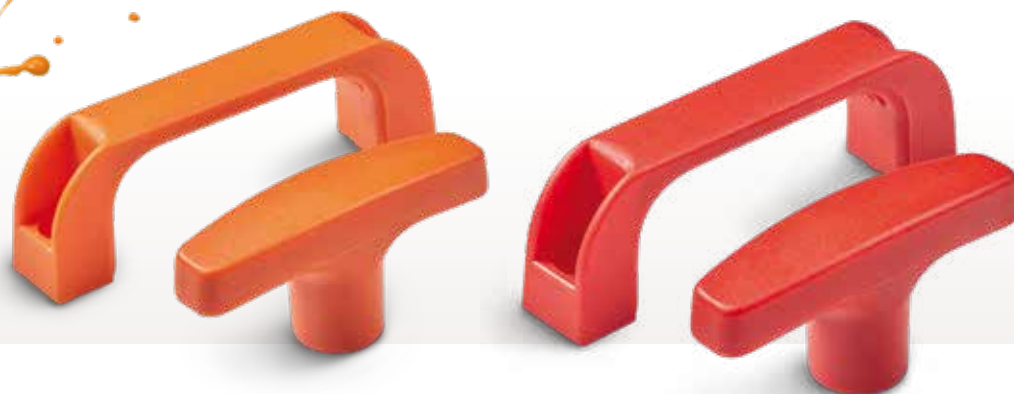


2 NEW COLOURS FOR HANDLES AND T-HANDLES

Coloured models are always the most requested but they are difficult to find. Now from the month of November we will be expanding our range of available **handles B224** and **T-handles L270**.

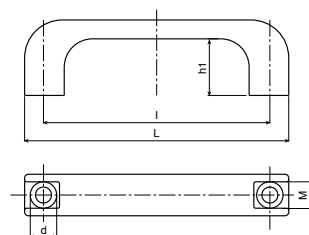
2 new colours always in stock without minimum quantity requirements: **Orange RAL 2004** e **Red RAL 3000**.

See our catalogue or visit our web site for more details.



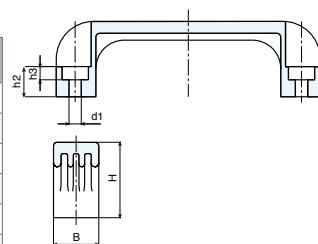
B224-16 • Handle • Orange (RAL 2004 code 02)

Stock	Art.	L	I	B	M	H	h1	h2	h3	d	d1	Weight	F1 (N)	F2 (N)
L	B224094.TG6.502PP	110	94	21	13	37	29	13	7	11	6,5	22 g	2500	1250
L	B224117.TG6.502PP	140	117	24	13	40	29	15	7	14	6,5	43 g	4400	3000
L	B224117.TG8.502PP	140	117	24	13	40	29	15	9	14	8,5	39 g	4400	3000
L	B224120.TG6.502PP	140	120	24	14	40	29	15	7	14	6,5	42 g	4800	3200
L	B224120.TG8.502PP	140	120	24	14	40	29	15	9	14	8,5	39 g	4800	3200
L	B224132.TG8.502PP	151	132	26	14	43	31	16	9	14	8,5	63 g	3400	3200
L	B224180.TG8.502PP	200	180	28	17	51	39	21	9	14	8,5	74 g	4000	3000
L	B224235.TG10.502PP	262	235	32	20	53	40	21	11	17	10,5	123 g	3800	3000



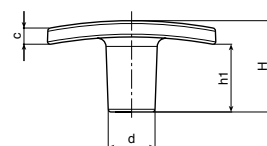
B224-16 • Handle • Red (RAL 3000 code 16)

Stock	Art.	L	I	B	M	H	h1	h2	h3	d	d1	Weight	F1 (N)	F2 (N)
L	B224094.TG6.516PP	110	94	21	13	37	29	13	7	11	6,5	22 g	2500	1250
L	B224117.TG6.516PP	140	117	24	13	40	29	15	7	14	6,5	43 g	4400	3000
L	B224117.TG8.516PP	140	117	24	13	40	29	15	9	14	8,5	39 g	4400	3000
L	B224120.TG6.516PP	140	120	24	14	40	29	15	7	14	6,5	42 g	4800	3200
L	B224120.TG8.516PP	140	120	24	14	40	29	15	9	14	8,5	39 g	4800	3200
L	B224132.TG8.516PP	151	132	26	14	43	31	16	9	14	8,5	63 g	3400	3200
L	B224180.TG8.516PP	200	180	28	17	51	39	21	9	14	8,5	74 g	4000	3000
L	B224235.TG10.516PP	262	235	32	20	53	40	21	11	17	10,5	123 g	3800	3000



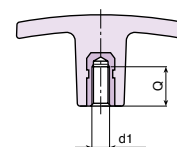
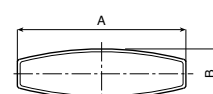
L270-02 • T-Handle with threaded insert • Orange (RAL 2004 code 02)

Stock	Art.	A	B	H	h1	c	d	d1 6H	Q	Weight	F1 (N)
L	L27050.TM0602	50	15	24	17	5	14	M06	10	11 g	4100
L	L27060.TM0802	60	18	33	24	6	16,5	M08	14	17,5 g	5800
L	L27072.TM1002	72	19	34	20	10	18	M10	21	30 g	6500



L270-16 • T-Handle with threaded insert • Red (RAL 3000 cod. 16)

Stock	Art.	A	B	H	h1	c	d	d1 6H	Q	Weight	F1 (N)
L	L27050.TM0602	50	15	24	17	5	14	M05	12	13 g	4100
L	L27060.TM0802	50	15	24	17	5	14	M06	10	11 g	4100
L	L27060.TM0816	60	18	33	24	6	16,5	M08	14	17,5 g	5800
L	L27072.TM1002	72	19	34	20	10	18	M10	21	30 g	6500



**AESTHETICS
AND HARMONY**



**NEW
PRODUCT!**



WING NUTS AND T-HANDLES



NEW METALLINE® WING NUT L250CIN-L251CIN

Boteco amplia ancora una volta la già conosciuta gamma di prodotti METALLINE®, aggiungendo un nuovo prodotto: il galletto in acciaio inox integrale con foro filettato L250CIN e la sua variante con perno filettato L251CIN.

Il galletto è stato modellato seguendo le linee del nostro famoso galletto L750 in plastica, ed è ricavato da microfusione utilizzando, per la versione base, un acciaio inox Aisi 304 o, in alternativa, un più performante Aisi 316. Il prodotto non presenta nessun foro e nessun scarico, al di fuori del foro filettato, e quindi si presta ottimamente per l'utilizzo in applicazioni medicali o alimentari.

Un ottimo prodotto da utilizzare anche su strumenti di laboratorio, analisi ed apparecchi di misura.

AVAILABLE VERSIONS

- **L250 CIN:** Stainless steel wing nut, with threaded blind hole;
- **L251 CIN:** Stainless steel wing nut, with assembled threaded stud.

AVAILABLE DIMENSIONS

- **L250/L251-25 M06:** Aisi304 stainless steel wing nut width 25mm with M06 hole/stud;
- **L250/L251-30 M08:** Aisi304 stainless steel wing nut width 30mm with M08 hole/stud;
- **L250/L251-36 M10:** Aisi304 stainless steel wing nut width 36mm with M10 hole/stud;

The catalogue pages for these items have already been published in the section **L - Wing nuts and T-handles** on our web site **www.boteco.it**

Contact our sales office
sales@boteco.it
for prices or our technical office
tecnico@boteco.it
for further information.

BOTECO S.r.l.
Via Pettinà, 16 • 36010 ZANÉ (VI) • ITALY
Tel. +39 0445.316411 • Fax +39 0445.316400
www.boteco.it • info@boteco.it